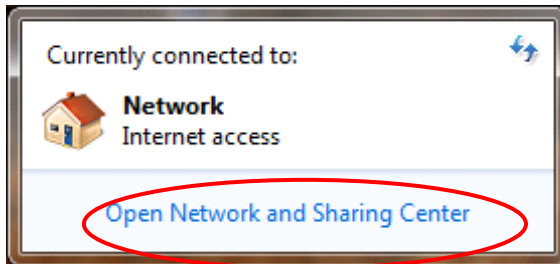
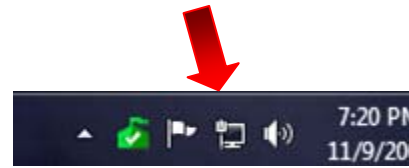


CONNECTING TO SAILOR WITH WINDOWS 7

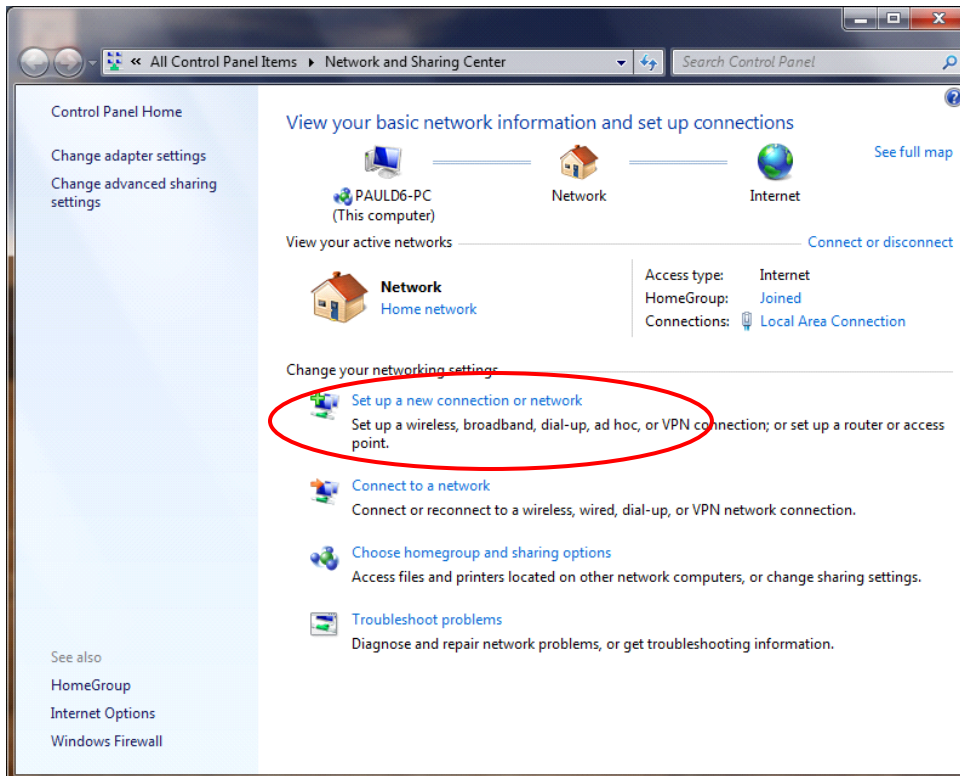
Setting up your Windows 7 computer to dial into the Sailor Network using a Sailor Cruise or VIP Account

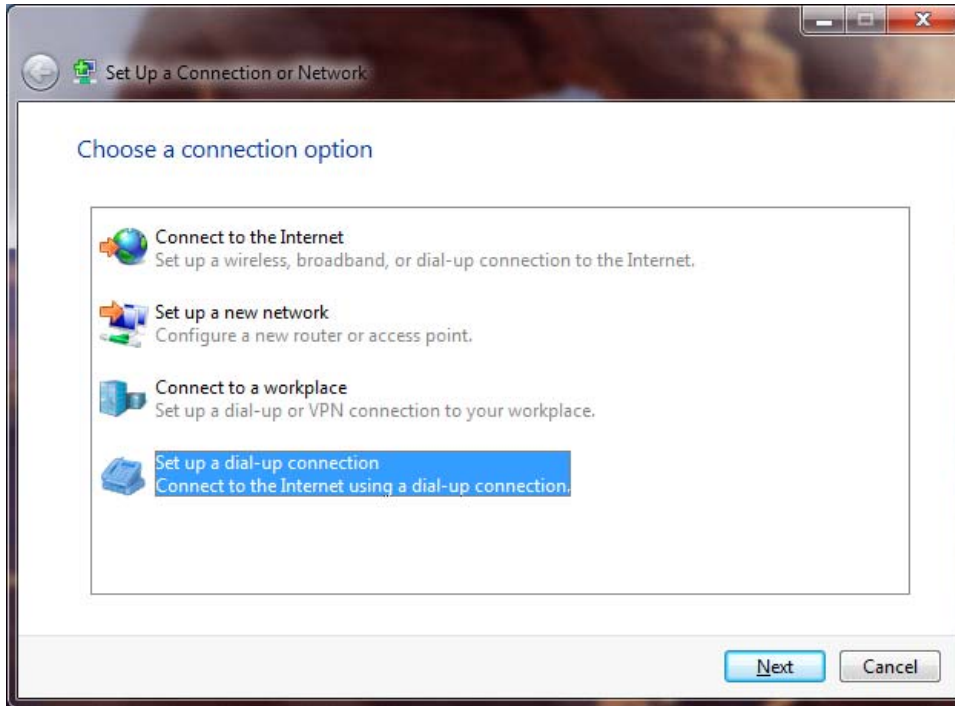
Click on **Internet Access** in the Systems tray
On the right side of the task bar

Click **Open Network and Sharing Center**.

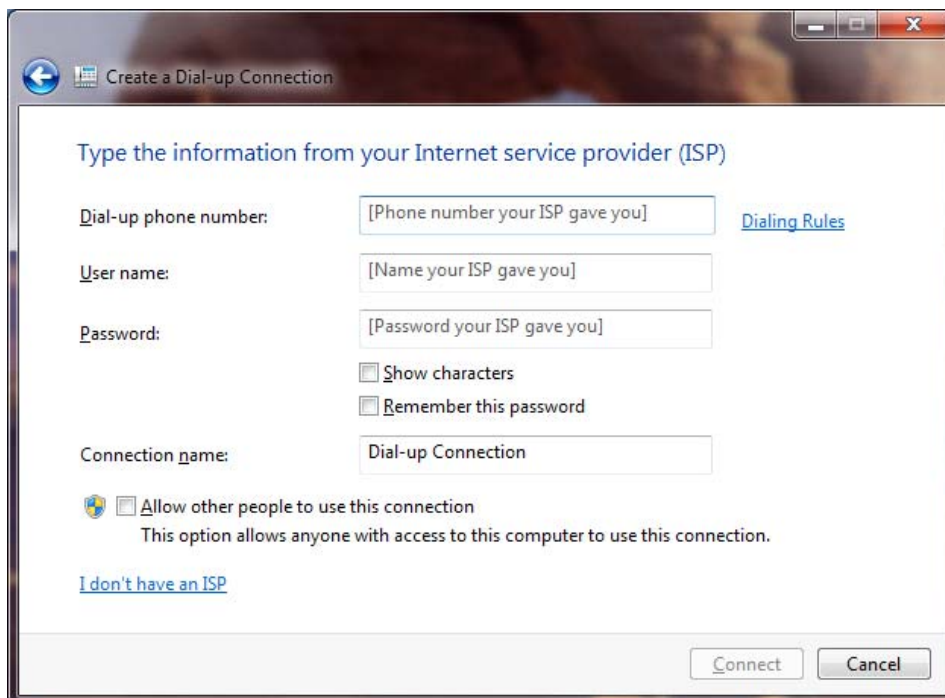


Click **Set up a new connection or network**. The Network options screen appears.





Select **Set up a dial-up connection**. Click **Next**.



Enter the local Sailor dial-up access phone number you are dialing, including area code in the **Dial-up phone number** space. (See the [last page of these instructions](#) for a list of access numbers. **Be careful not to dial a long distance number! Sailor is not responsible for long distance charges**). Preface the phone number with ***70** to disable call waiting.

Create a Dial-up Connection

Type the information from your Internet service provider (ISP)

Dial-up phone number: [Phone number your ISP gave you] [Dialing Rules](#)

User name: [Name your ISP gave you]

Password: [Password your ISP gave you]

Show characters

Remember this password

Connection name: Dial-up Connection

Allow other people to use this connection
This option allows anyone with access to this computer to use this connection.

[I don't have an ISP](#)

Connect Cancel

Type your username and password (in the packet we sent you, on your **Cruise Account Passport**)

You can also click **Show Characters** to make sure you are entering the password correctly and have Windows 7 **Remember this password** after you have typed it in.

You can also check **Remember this password** if you wish

You can also allow other people with access to your computer to use this Sailor connection.

Enter **Sailor** as the **Connection name**.

Click on the **Connect** button, and then open your browser.

Need assistance?

If you cannot get a connection using this Dial-Up Networking Connection, please call the Sailor Help Desk, Monday through Saturday, 9 to 5, at (410) 396 - 4636 for assistance.