

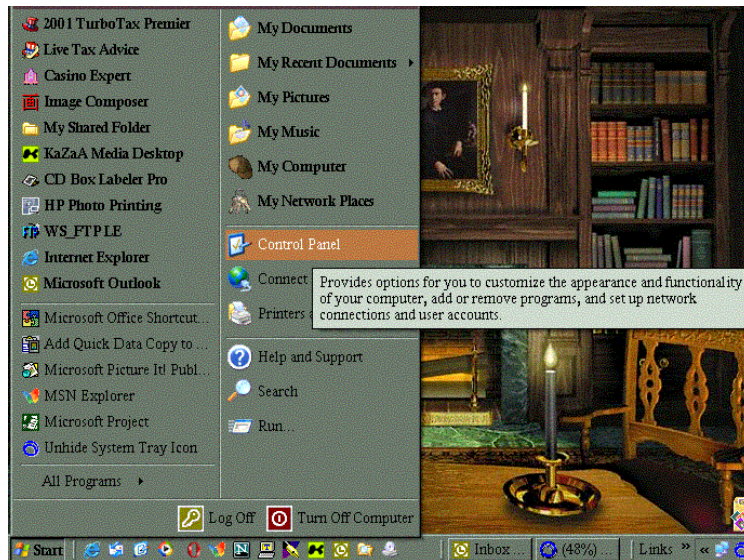


# Dial Up Networking for Windows XP

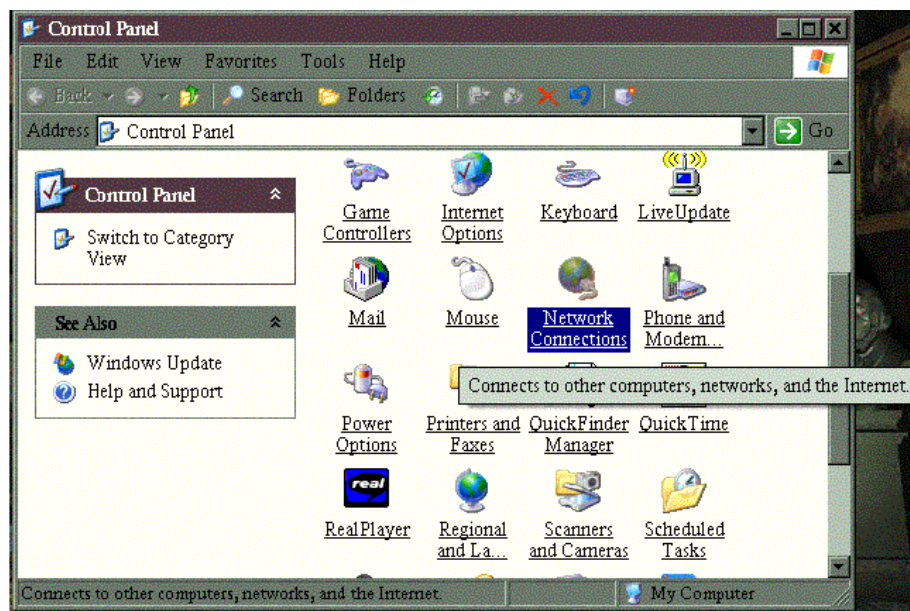
(Revised August 2011)

To use a Sailor Cruise or VIP Account your computer must have an internal or external telephone modem. The modem must be connected with a telephone cord to a telephone wall jack, preferably with a surge protector between the modem and the wall jack.

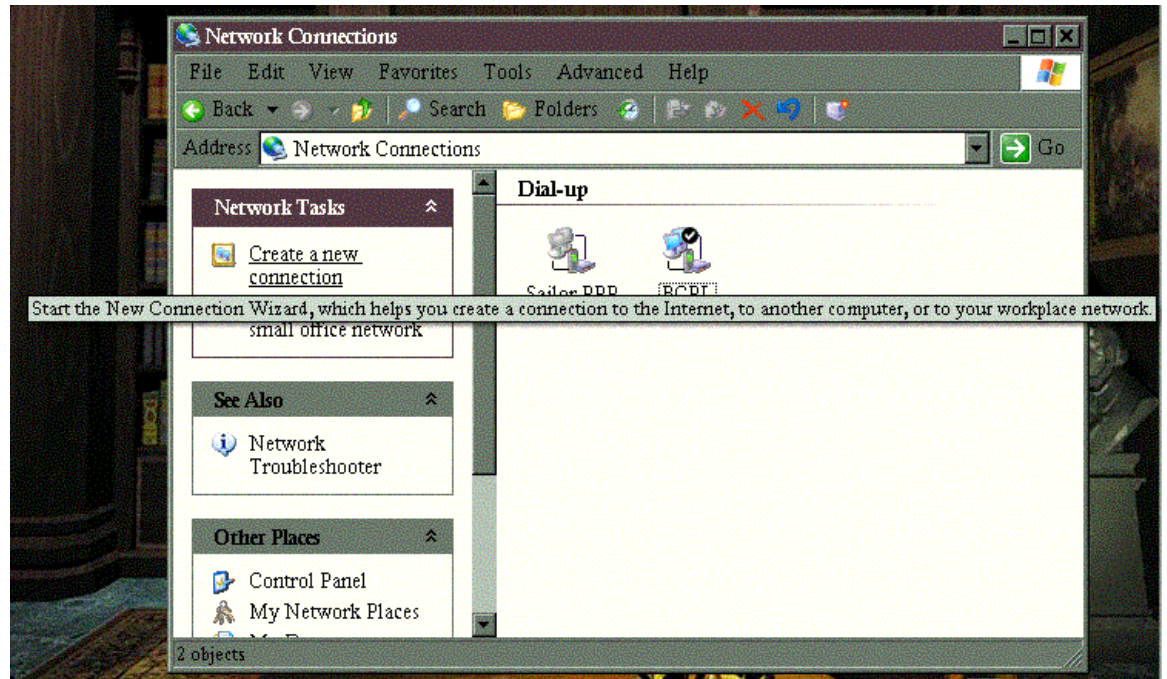
1. Click **Start**, then click **Control Panel**.



2. Double click the **Network Connections** icon.



3. Click on the **Create a new connection** under Network Tasks in the left panel of the Network Connections dialogue box.

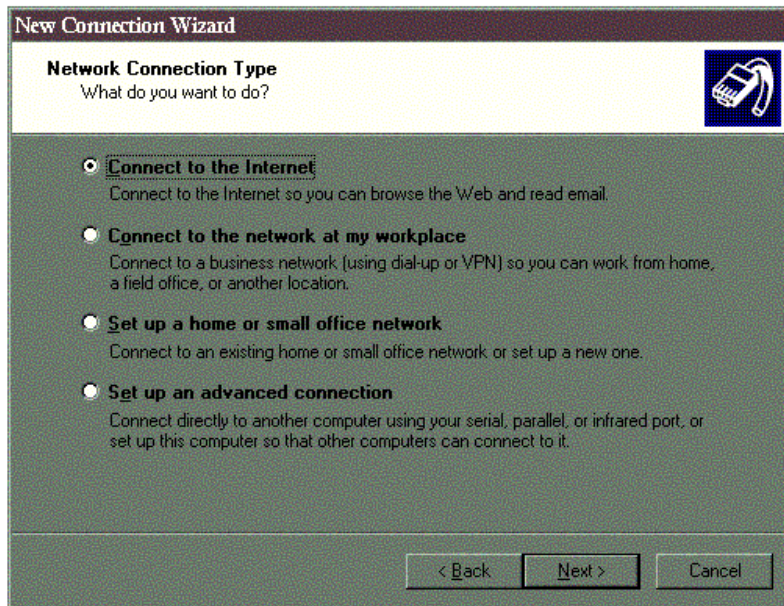


4. Click the **Next** button when the New Connection Wizard opens.

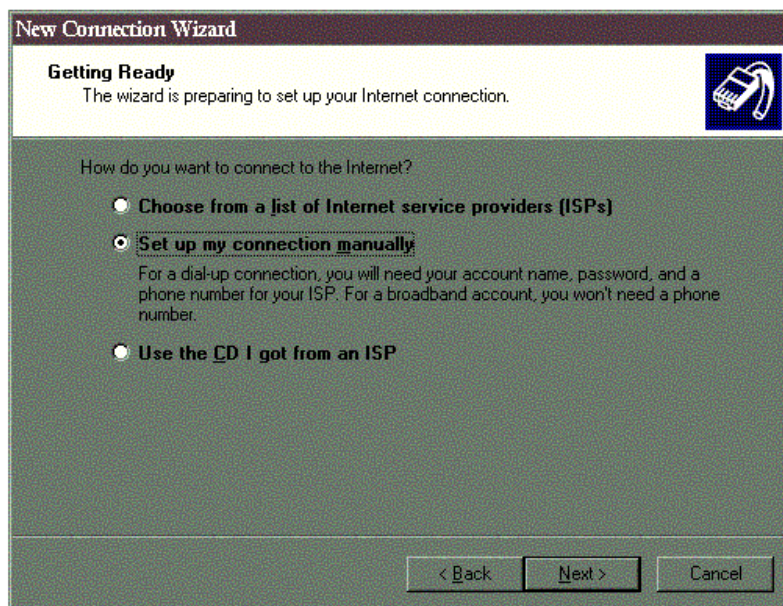




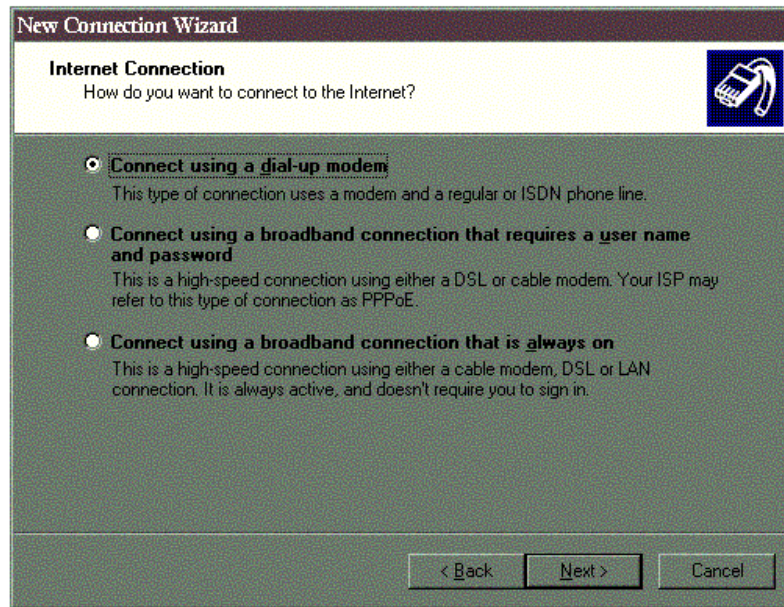
5. Make sure the first option **Connect to the Internet** is selected, and then **click** on the **Next** button.



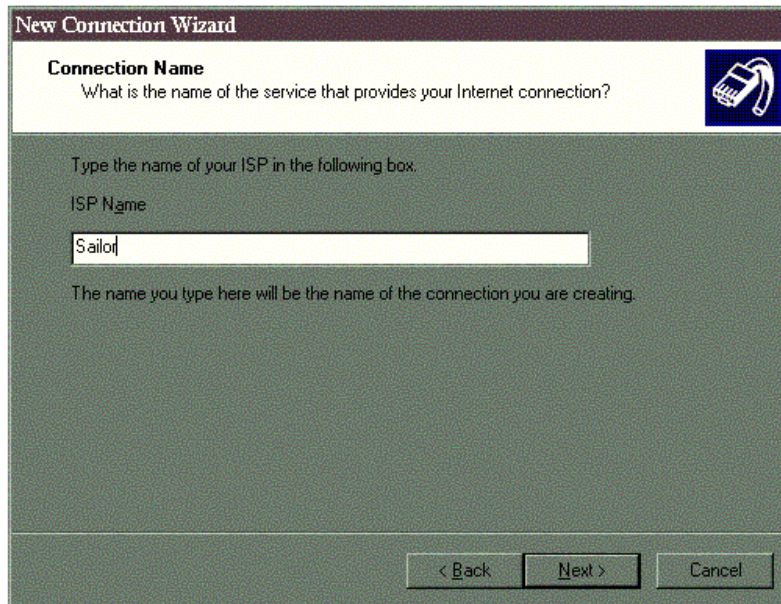
6. Select the **Set up my connection manually** option and click **Next**.



7. Select the **Connect using a dial-up modem** option and click **Next**.



8. Type **Sailor** into the **ISP Name** box, and click **Next**.



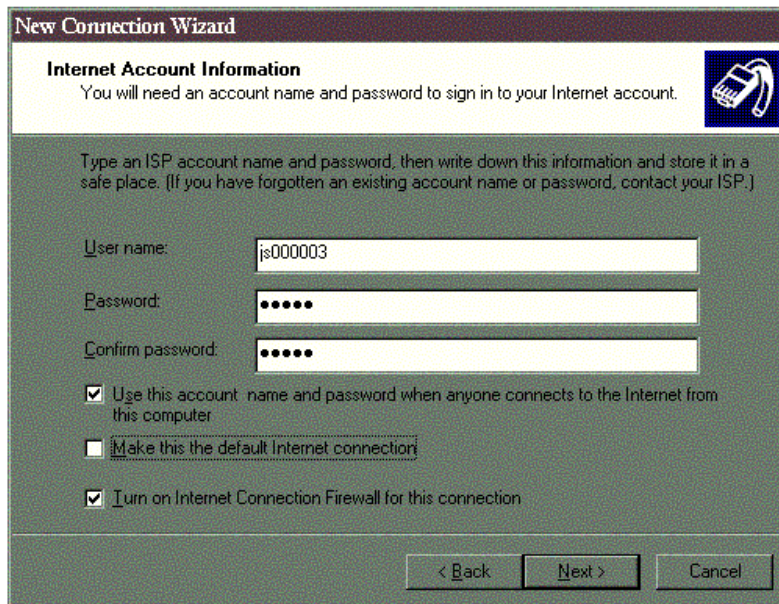


9 Enter the ten digit **Sailor dial-up access number that is a local call** for your location in the **Phone number** box, and click **Next**. (The list of Sailor Dial-Up Access numbers is on the last page of these instructions.)



The screenshot shows a window titled "New Connection Wizard" with a sub-header "Phone Number to Dial" and a question "What is your ISP's phone number?". A blue icon of a telephone is in the top right. Below the question, it says "Type the phone number below." and "Phone number:". A text box contains "Your local access number". A note below the text box says: "You might need to include a '1' or the area code, or both. If you are not sure you need the extra numbers, dial the phone number on your telephone. If you hear a modem sound, the number dialed is correct." At the bottom are buttons for "< Back", "Next >", and "Cancel".

10. Enter the **user name** and **password** found on your Sailor Cruise Account Passport. Confirm your password. Check the **first and third boxes** below Confirm password. Click **Next**.



The screenshot shows a window titled "New Connection Wizard" with a sub-header "Internet Account Information" and a note "You will need an account name and password to sign in to your Internet account." A blue icon of a telephone is in the top right. Below the note, it says "Type an ISP account name and password, then write down this information and store it in a safe place. (If you have forgotten an existing account name or password, contact your ISP.)". There are three text boxes: "User name:" with "js000003", "Password:" with "\*\*\*\*\*", and "Confirm password:" with "\*\*\*\*\*". Below the text boxes are three checkboxes: " Use this account name and password when anyone connects to the Internet from this computer", " Make this the default Internet connection", and " Turn on Internet Connection Firewall for this connection". At the bottom are buttons for "< Back", "Next >", and "Cancel".

11. You may choose to have a Shortcut icon on your desktop by checking the “Add a shortcut to this connection to my desktop” box. Click **Finish** to exit the Wizard.



12. Just double click on the Sailor shortcut on your desktop and your modem will dial up a Sailor connection. Remember, to access the web you will need to start your web browser (i.e., Internet Explorer, Firefox) after your dial-up connection is established.

**NEED ASSISTANCE?** Call the Sailor Help Desk at 410-396-4636.

## Sailor Dial-Up Access Numbers

*Please be careful to only use numbers that are Local Calls from your location.*

*If you use a number that requires "1" before the Area Code to make a connection, you may incur Long Distance charges. Sailor is not responsible for Long Distance charges incurred dialing Long Distance into Sailor dial access numbers.*

Allegany County (Cumberland)	(301) 777-3222
Anne Arundel County (Annapolis)	(410) 222-7100
Baltimore City	(410) 605-0500
Baltimore County (Towson)	(410) 494-1199
Calvert County (North Beach)	(410) 257-9263
Caroline County (Easton exchange)	(410) 820-5773
Carroll County (Westminster)	(410) 848-1230
Cecil County (Elkton)	(410) 392-0909
Cecil County (Rising Sun)	(410) 658-7830
Charles County (Waldorf)	(301) 645-2002
Dorchester County (Cambridge)	(410) 221-0066
Prince George's County (Landover)	(301) 925-2400
Queen Anne's County (Chestertown exch)	(410) 778-1500
St. Mary's County (Lexington Park)	(301) 863-5291
Somerset County (Salisbury exchange)	(410) 548-1654
Talbot County (Easton)	(410) 820-4411
Washington County (Hagerstown)	(301) 739-7600
Wicomico County (Salisbury)	(410) 742-0500
Worcester County (Salisbury exchange)	(410) 548-1686