

Dial Up Networking for Windows 8

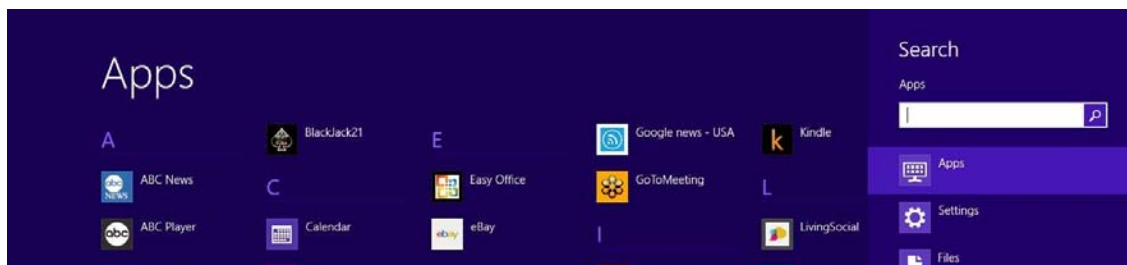
EPFL Help Desk, January 2013

Your computer will need a telephone dial-up modem to use the Sailor Cruise Account service. The modem can be internal (installed inside your computer) or external (connecting to a USB jack). Connect your modem computer's dial-up modem to your telephone line (landline) wall jack.

At the Windows 8 startup screen, move your mouse to the right lower edge of the screen. When the following icons appear choose **Search**.



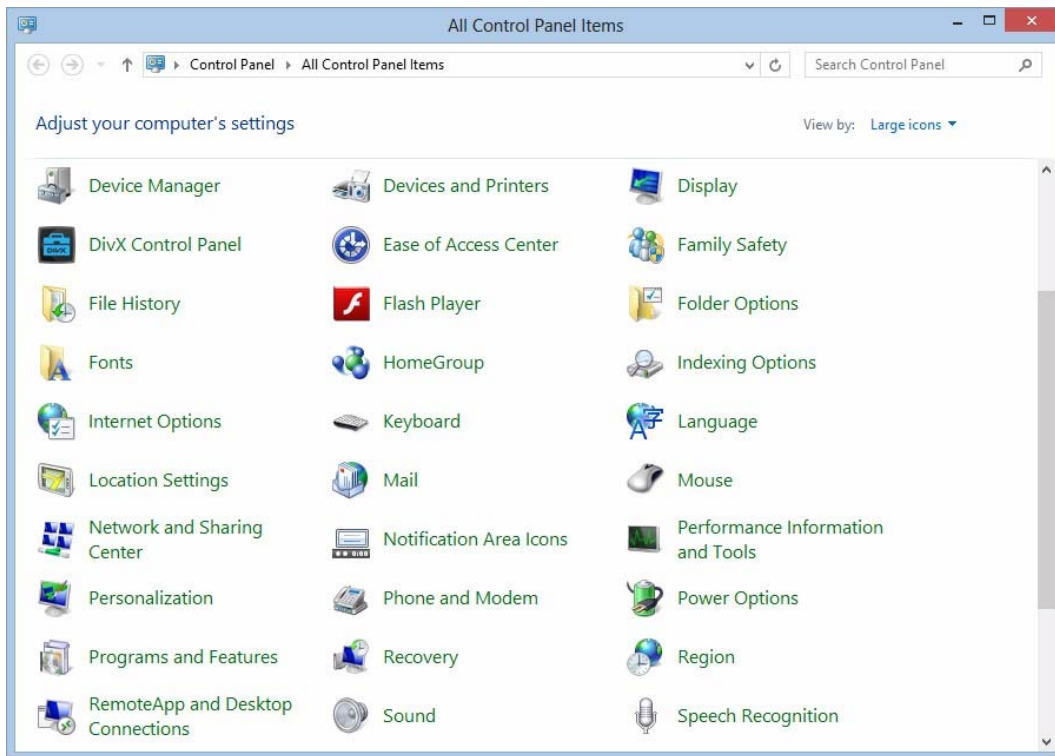
Type **Control Panel** in the search box.



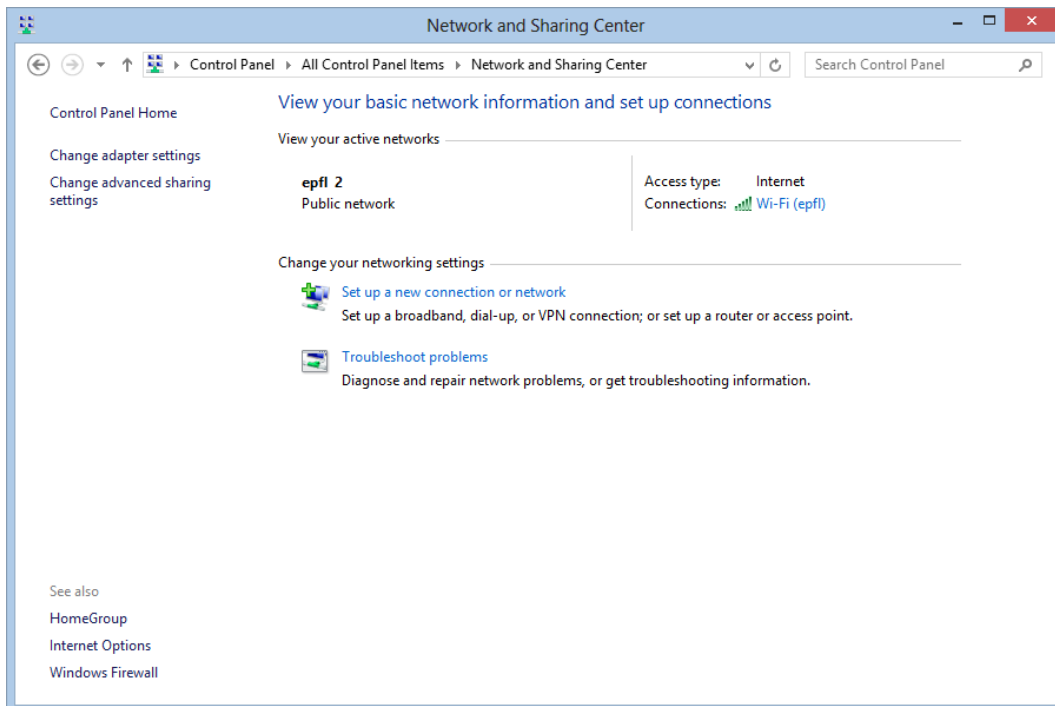
Click on the **Control Panel** icon.



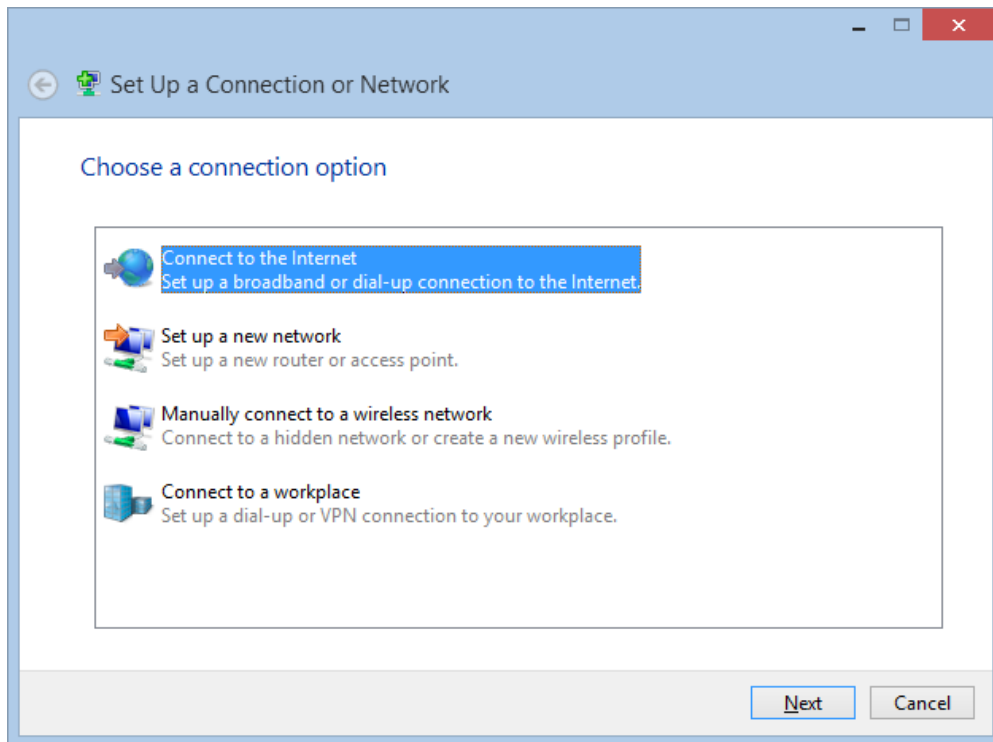
Scroll down and click on **Network and Sharing Center**.



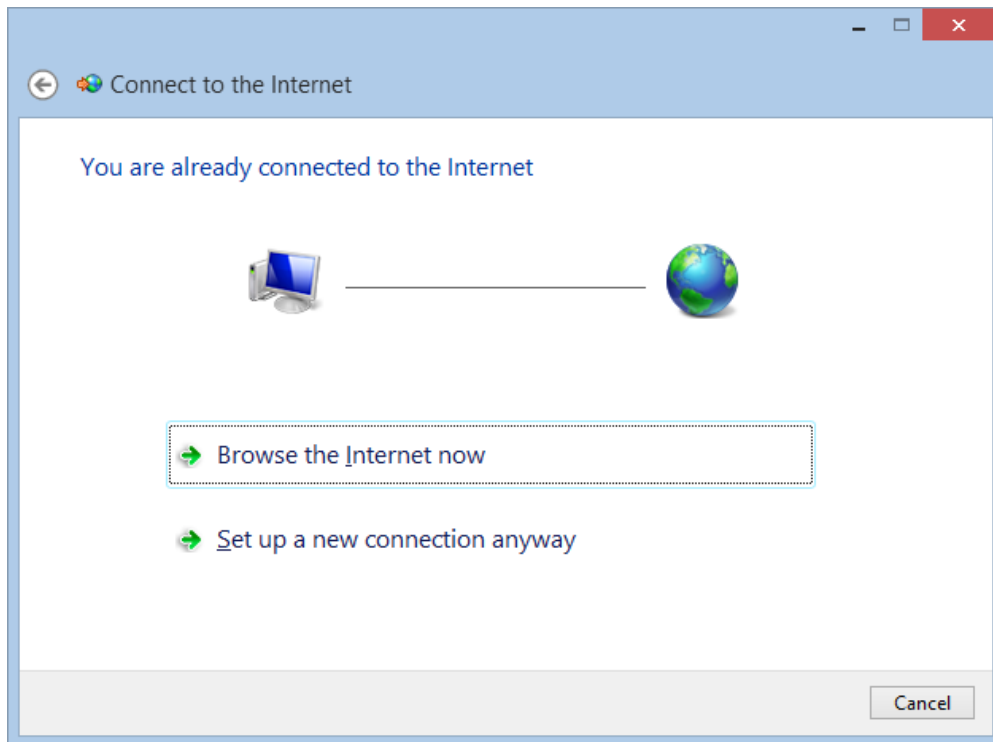
Click on **Set up a new connection or network**.



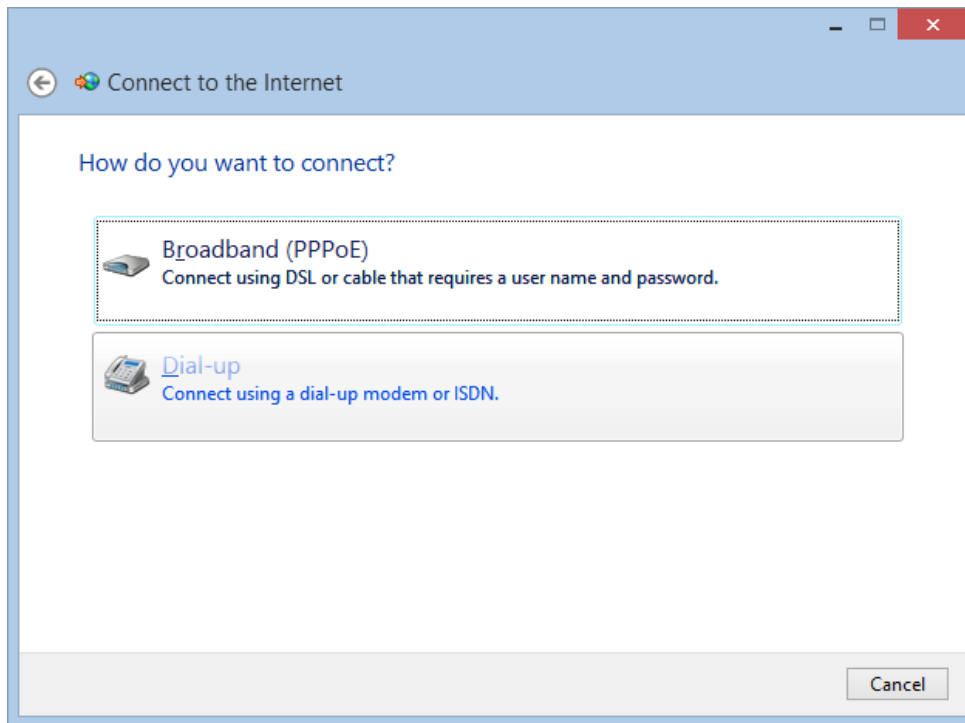
Choose **Connect to the Internet**.



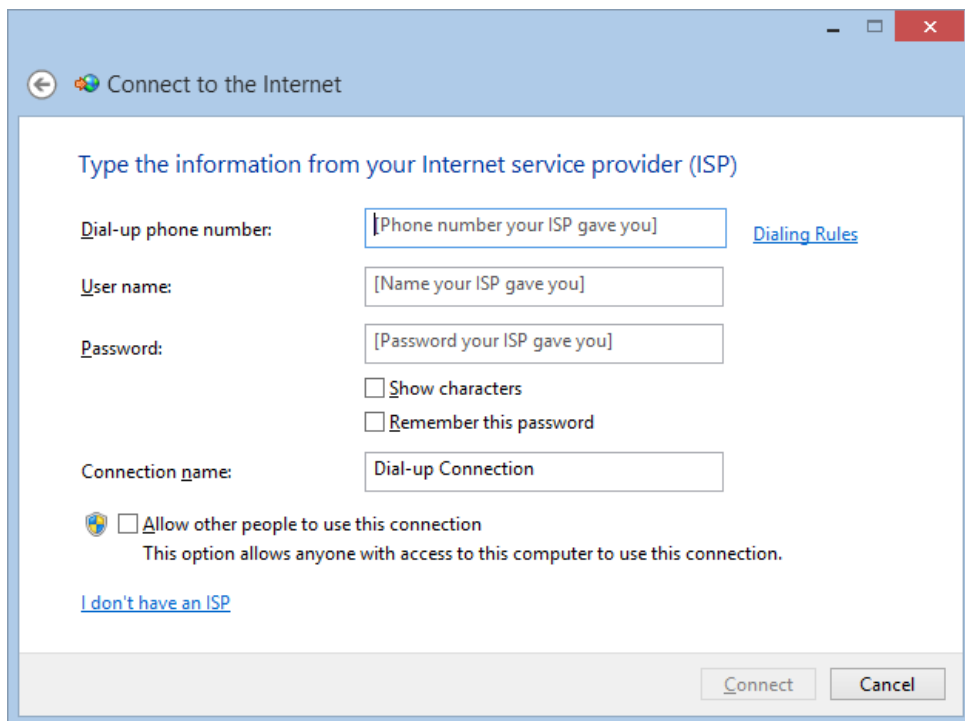
If you see this screen, choose **Set up a new connection anyway**.



Choose **Dial-up**.



Fill in the form. The phone number for your area is on the last page of this guide. User information is on your Sailor Cruise Account Passport. Additional guidance appears on the next page.



- In **Dial-up phone number** box, enter the ten digit Sailor Dial-Up Access number that is a local call from your location. (The list of local phone numbers for each county is located on the last page of these instructions.)
 - **Caution:** You will be responsible for any long distance charges if you configure your computer to dial a long distance number. You need to include the area code unless you click on the dialing rules link and complete that dialog box. If you have Call Waiting, remember to preface the phone number with ***70** to disable Call Waiting. If you must dial 9 to get an outside line, place **9** before the area code.
- Type your **user name** and **password** from your Sailor Cruise Account Passport.
- You can check **Remember this password** if you wish.
- Type **Sailor** for the **Connection name**.
- When you complete the form, you will be able to click on the **Connect** button followed by the **Dial** button to dial into your Sailor Cruise Account.
- When the connection is established, open your **web browser**.

Your telephone line will be in use until you disconnect your call.

To disconnect your dial-up session / hang up:

- Click the **Internet access** icon in the System Tray
- Click **Open Network and Sharing Center**.
- Click **Sailor**
- Click **Disconnect**.

To establish future dial – up connections:

- Click the **Internet access** icon in the System Tray and
- Choose **Sailor, Connect** and **Dial**.

If you need assistance, call the Sailor Help Desk at 410 – 396 – 4636, Monday through Friday, 9 to 5.

Sailor Dial-up Access Numbers are on the next page.

SAILOR DIAL-UP ACCESS NUMBERS

Please be careful to only use numbers that are Local Calls from your location.

If you use a number that requires "1" before the Area Code to make a connection, you may incur Long Distance charges. Sailor is not responsible for Long Distance charges incurred dialing Long Distance into Sailor dial access numbers.

Allegany County (Cumberland)	(301) 777-3222
Anne Arundel County (Annapolis)	(410) 222-7100
Baltimore City	(410) 605-0500
Baltimore County (Towson)	(410) 494-1199
Calvert County (North Beach)	(410) 257-9263
Caroline County (Easton exchange)	(410) 820-5773
Carroll County (Westminster)	(410) 848-1230
Cecil County (Elkton)	(410) 392-0909
Cecil County (Rising Sun)	(410) 658-7830
Charles County (Waldorf)	(301) 645-2002
Dorchester County (Cambridge)	(410) 221-0066
Frederick County (Frederick)	(301) 620-0055
Garrett County (Oakland)	(301) 334 6515
Harford County (Bel Air)	(410) 638-5669
Howard County (Columbia)	(410) 730-0707
Kent County (Chestertown)	(410) 778-9582
Montgomery County (Rockville)	(301) 424-4200
Prince George's County (Landover)	(301) 925-2400
Queen Anne's County (Chestertown exch.)	(410) 778-1500
St. Mary's County (Lexington Park)	(301) 863-5291
Somerset County (Salisbury exchange)	(410) 548-1654
Talbot County (Easton)	(410) 820-4411
Washington County (Hagerstown)	(301) 739-7600
Wicomico County (Salisbury)	(410) 742-0500
Worcester County (Salisbury exchange)	(410) 548-1686